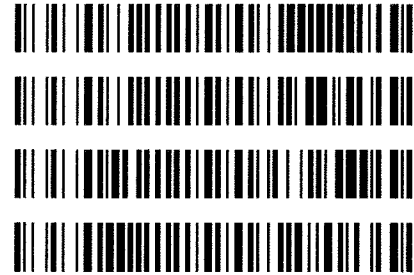


Worklist: 1888

<u>LAB_CASE</u>	<u>ITEM</u>	<u>TASK_ID</u>	<u>DESCRIPTION</u>
C2017-1797	1	94574	AM 3 Urine Carboxy-THC
C2017-1806	1	94638	AM 3 Urine Carboxy-THC
M2017-3374	2	94637	AM 3 Urine Carboxy-THC
P2017-1949	2	94639	AM 3 Urine Carboxy-THC



A handwritten signature or set of initials in the bottom right corner of the page, appearing to be written in black ink.

Area Percent Report

Data Path : D:\DATA\2017\91217\
 Data File : 01301008.D
 Acq On : 12 Sep 2017 10:52
 Operator :
 Sample : Negative C-THC Control
 Misc : Negative lot 9517: AM# 3
 ALS Vial : 13 Sample Multiplier: 1

Integration Parameters: autoint1.e
 Integrator: ChemStation

Method : D:\DATA\2017\2017 Reference Materials\Stimulant Drug Mix A.D\TOXI-A 10115.M
 Title :

Signal : EIC Ion 371.00 (370.70 to 371.70): 01301008.D\data.ms

peak #	R.T. min	first scan	max scan	last scan	PK TY	peak height	corr. area	corr. % max.	% of total
1	3.866	3	16	27	BV	739821	9776630	100.00%	97.352%
2	3.946	27	31	40	PV	3305	39925	0.41%	0.398%
3	4.036	40	47	56	PV	10197	160563	1.64%	1.599%
4	4.577	141	148	155	PV	4166	65453	0.67%	0.652%

Sum of corrected areas: 10042570

Signal : EIC Ion 473.00 (472.70 to 473.70): 01301008.D\data.ms

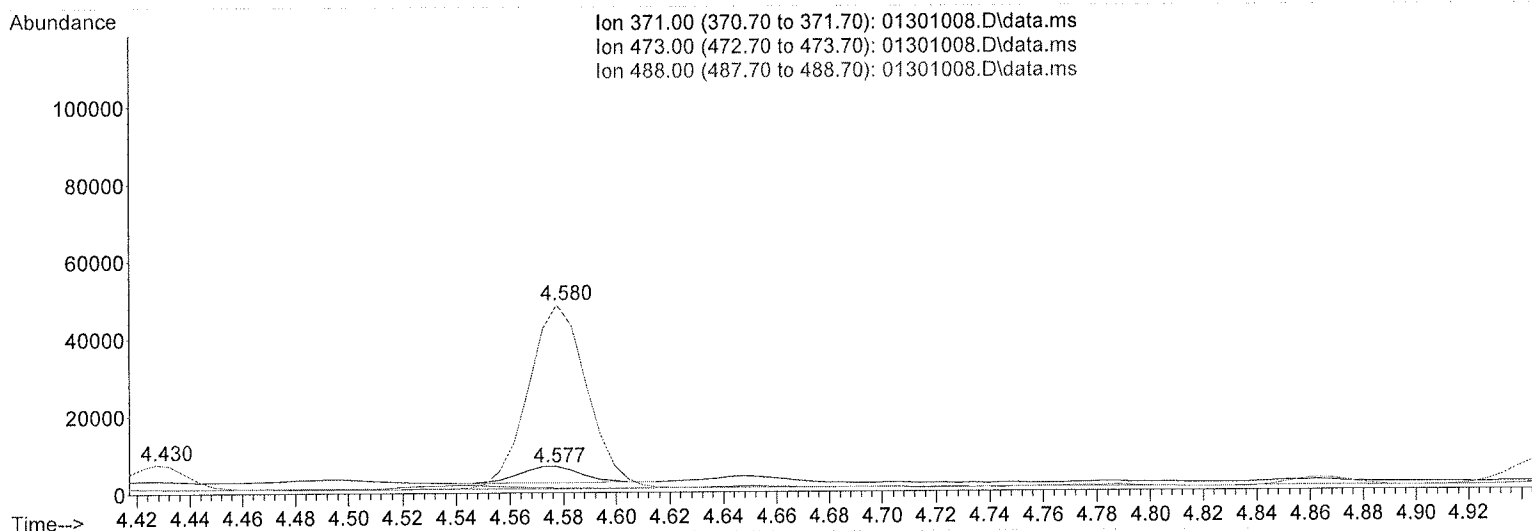
peak #	R.T. min	first scan	max scan	last scan	PK TY	peak height	corr. area	corr. % max.	% of total
No peaks were detected using the method integration parameters!									

Signal : EIC Ion 488.00 (487.70 to 488.70): 01301008.D\data.ms

peak #	R.T. min	first scan	max scan	last scan	PK TY	peak height	corr. area	corr. % max.	% of total
1	3.809	3	5	19	BB	6373	45147	6.15%	4.307%
2	4.430	101	121	129	BV 3	6519	121774	16.59%	11.616%
3	4.580	129	148	164	PB	46641	734143	100.00%	70.030%
4	4.950	208	217	238	VV	6621	147257	20.06%	14.047%

Sum of corrected areas: 1048320

TOXI-A 10115.M Tue Sep 12 11:58:17 2017



[Handwritten signature]

Area Percent Report

Data Path : D:\DATA\2017\91217\
 Data File : 01201007.D
 Acq On : 12 Sep 2017 10:43
 Operator :
 Sample : Positive C-THC Control
 Misc : C-THC lot#FE03121501 in negative lot 9517:AM# 3 Worklist 1888
 ALS Vial : 12 Sample Multiplier: 1

Integration Parameters: autoint1.e
 Integrator: ChemStation

Method : D:\DATA\2017\2017 Reference Materials\Stimulant Drug Mix A.D\TOXI-A 10115.M
 Title :

Signal : EIC Ion 371.00 (370.70 to 371.70): 01201007.D\data.ms

peak #	R.T. min	first scan	max scan	last scan	PK TY	peak height	corr. area	corr. % max.	% of total
1	3.866	5	16	28	BV	754589	10006125	100.00%	66.022%
2	4.038	40	48	56	PV	8754	142568	1.42%	0.941%
3	4.579	142	148	152	PV	4319	67074	0.67%	0.443%
4	4.641	152	160	183	VV	292869	4939885	49.37%	32.594%

Sum of corrected areas: 15155652

Signal : EIC Ion 473.00 (472.70 to 473.70): 01201007.D\data.ms

peak #	R.T. min	first scan	max scan	last scan	PK TY	peak height	corr. area	corr. % max.	% of total
1	4.643	152	160	184	PV	135949	2273310	100.00%	100.000%

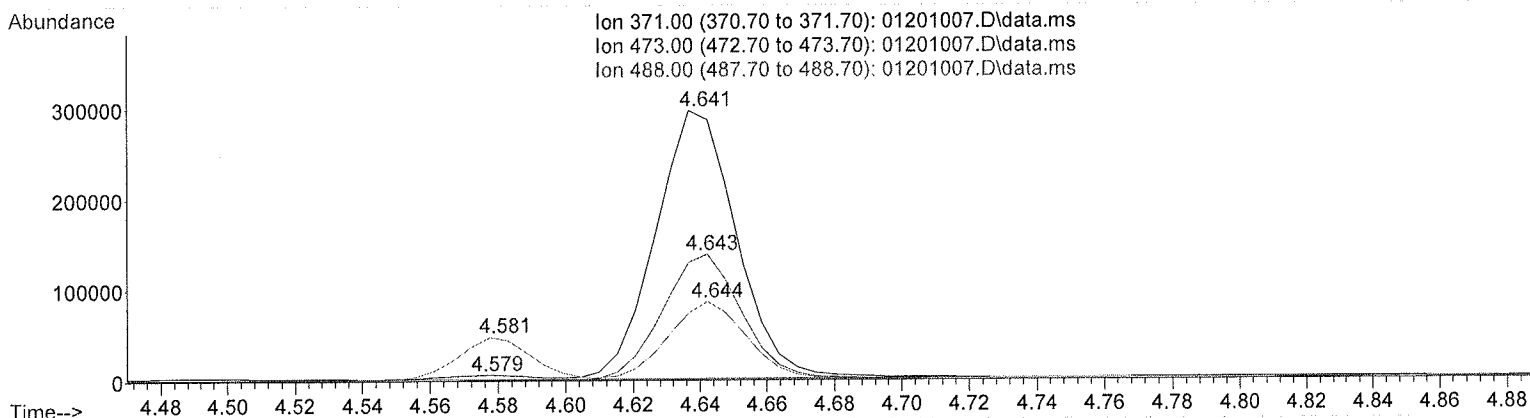
Sum of corrected areas: 2273310

Signal : EIC Ion 488.00 (487.70 to 488.70): 01201007.D\data.ms

peak #	R.T. min	first scan	max scan	last scan	PK TY	peak height	corr. area	corr. % max.	% of total
1	3.809	3	5	19	BV	5391	38553	2.75%	1.596%
2	4.431	101	121	136	PV 3	6436	119367	8.51%	4.941%
3	4.581	136	149	154	PV	46899	731128	52.10%	30.266%
4	4.644	154	160	178	VV	83372	1403408	100.00%	58.096%
5	4.951	209	217	241	VB	5391	123207	8.78%	5.100%

Sum of corrected areas: 2415664

TOXI-A 10115.M Tue Sep 12 11:58:00 2017



[Handwritten signature]

Area Percent Report

Data Path : D:\DATA\2017\91217\
 Data File : 01201018.D
 Acq On : 12 Sep 2017 12:25
 Operator :
 Sample : Positive C-THC Control
 Misc : C-THC lot#FE03121501 in negative lot 9517:AM# 3 Worklist 1888
 ALS Vial : 12 Sample Multiplier: 1

Integration Parameters: autoint1.e
 Integrator: ChemStation

Method : D:\DATA\2017\2017 Reference Materials\Stimulant Drug Mix A.D\TOXI-A 10115.M
 Title :

Signal : EIC Ion 371.00 (370.70 to 371.70): 01201018.D\data.ms

peak #	R.T. min	first scan	max scan	last scan	PK TY	peak height	corr. area	corr. % max.	% of total
1	3.864	3	15	27	BV	1007735	12967608	100.00%	71.337%
2	3.943	27	30	40	VV	4367	61885	0.48%	0.340%
3	4.035	40	47	56	PV	10507	158787	1.22%	0.874%
4	4.575	140	148	152	PV	5207	81620	0.63%	0.449%
5	4.638	152	159	183	VV	306510	4908056	37.85%	27.000%

Sum of corrected areas: 18177958

Signal : EIC Ion 473.00 (472.70 to 473.70): 01201018.D\data.ms

peak #	R.T. min	first scan	max scan	last scan	PK TY	peak height	corr. area	corr. % max.	% of total
1	4.639	151	159	179	PB	140438	2226062	100.00%	100.000%

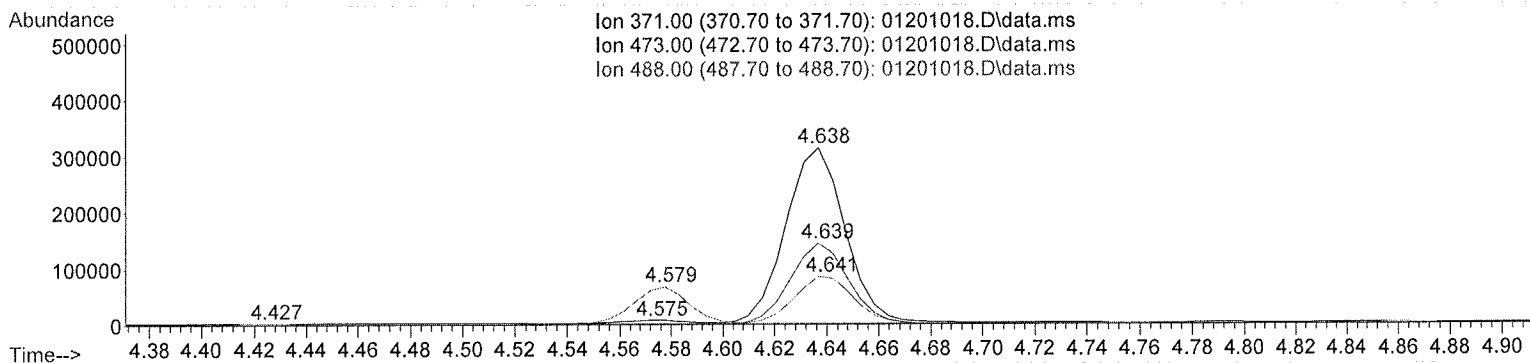
Sum of corrected areas: 2226062

Signal : EIC Ion 488.00 (487.70 to 488.70): 01201018.D\data.ms

peak #	R.T. min	first scan	max scan	last scan	PK TY	peak height	corr. area	corr. % max.	% of total
1	3.807	3	5	19	BV	4741	13108	0.96%	0.502%
2	4.427	100	120	136	BV 3	2706	66911	4.91%	2.563%
3	4.579	136	148	154	VV	65489	1014406	74.38%	38.853%
4	4.641	154	160	176	VV	83995	1363770	100.00%	52.234%
5	4.947	207	217	239	VV 2	6750	152713	11.20%	5.849%

Sum of corrected areas: 2610908

TOXI-A 10115.M Tue Sep 12 12:33:12 2017



[Handwritten signature]

Area Percent Report

Data Path : D:\DATA\2017\91217\
 Data File : 01401009.D
 Acq On : 12 Sep 2017 11:01
 Operator :
 Sample : BRC3 External Control
 Misc : Lot # 68440; AM# 3
 ALS Vial : 14 Sample Multiplier: 1

Integration Parameters: autoint1.e
 Integrator: ChemStation

Method : D:\DATA\2017\2017 Reference Materials\Stimulant Drug Mix A.D\TOXI-A 10115.M
 Title :

Signal : EIC Ion 371.00 (370.70 to 371.70): 01401009.D\data.ms

peak #	R.T. min	first scan	max scan	last scan	PK TY	peak height	corr. area	corr. % max.	% of total
1	3.864	3	15	44	BV	635877	8272964	100.00%	89.589%
2	4.575	141	148	152	BV	2568	42672	0.52%	0.462%
3	4.636	152	159	175	VB	53789	871679	10.54%	9.439%
4	4.846	187	198	207	BV 2	2763	47081	0.57%	0.510%

Sum of corrected areas: 9234396

Signal : EIC Ion 473.00 (472.70 to 473.70): 01401009.D\data.ms

peak #	R.T. min	first scan	max scan	last scan	PK TY	peak height	corr. area	corr. % max.	% of total
1	4.638	137	159	178	BB 2	24828	413876	100.00%	85.043%
2	5.108	229	247	261	BB 2	2978	72791	17.59%	14.957%

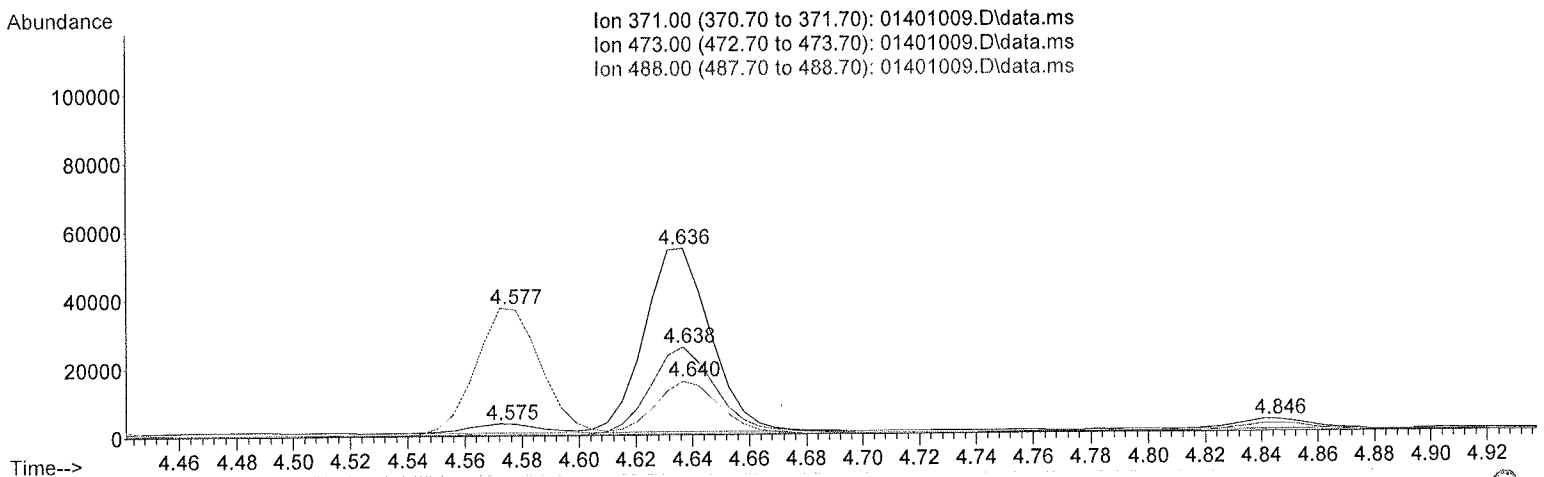
Sum of corrected areas: 486667

Signal : EIC Ion 488.00 (487.70 to 488.70): 01401009.D\data.ms

peak #	R.T. min	first scan	max scan	last scan	PK TY	peak height	corr. area	corr. % max.	% of total
1	4.428	114	120	129	BB	4909	75093	12.65%	8.216%
2	4.577	138	148	154	BV	37300	593384	100.00%	64.926%
3	4.640	154	160	173	VB	15108	245466	41.37%	26.858%

Sum of corrected areas: 913942

TOXI-A 10115.M Tue Sep 12 11:58:39 2017



(Handwritten signature)

2.4.4 Carboxy-THC QC Calculations

Run Date: 9/12/2017

Case Calculations:
Lab Case #: BRC3-68440

<i>EIC Ion 371 Corr. Area:</i>	871679	
<i>EIC Ion 473 Corr. Area:</i>	413876	473:371 Ratio: 0.475
<i>EIC Ion 488 Corr. Area:</i>	245466	488:371 Ratio: 0.282

Quality Control Calculations:

Retention Time acceptable range: 4.541 to 4.738

	<i>1st ctrl</i>	<i>2nd ctrl</i>
<i>EIC Ion 371 Corr. Area:</i>	4908056	4939885
<i>EIC Ion 473 Corr. Area:</i>	2226062	2273310
<i>EIC Ion 488 Corr. Area:</i>	1363770	1403408

Approximate minimum corrected area of 371 ion: ~ **981611**

<i>Ratio of 473:371</i>				
	<i>1st ctrl</i>		<i>2nd ctrl</i>	<i>avg.</i>
	0.454		0.460	0.457
<i>Accepted Range</i> <small>(+/- 20%)</small>	0.365 - 0.548			

<i>Ratio of 488:371</i>				
	<i>1st ctrl</i>		<i>2nd ctrl</i>	<i>avg.</i>
	0.278		0.284	0.281
<i>Accepted Range</i> <small>(+/- 20%)</small>	0.225 - 0.337			

Carboxy-calculation sheet
Revision 0 effective date 10/23/13
Issuing authority: Quality Manager

